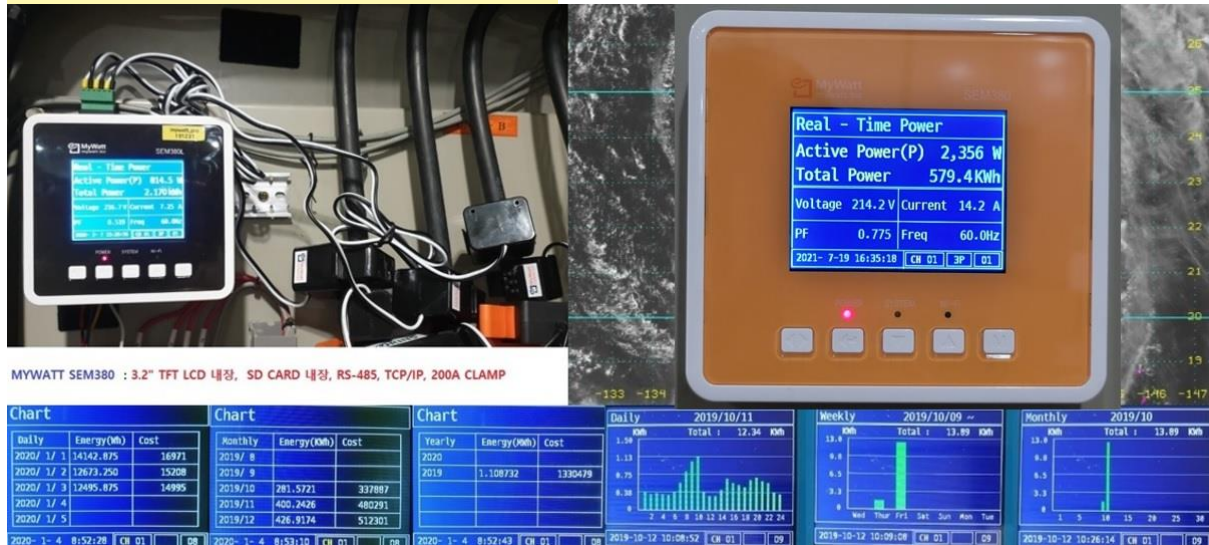


# SEM380 Smart Energy Logger

MYWATT SEM380 Panel Mounting Type 3-Phase Electricity Energy Logger (3.2" TFT LCD)

Panel Size: 1200MM X 1100MM



## Scope of Supply

1. SEM380 ENERGY-EYE Smart Electricity Energy Logger: 1set

\*3-Phase 4-Line Electricity, V, A, Power Factor, Frequency (Hz), Active Power, Reactive Power Apparent Power, Total Power

\*3.2" Icd Display Unit: Day/Week/Month/Year bar graph display, Day/Month/Year Chart display, 2-years data logging on Flash memory.

\*Communication: RS-485 MODBUS, TCP/IP (LAN), Free RS-485 software.

\*Accuracy: 1%

- 2. 5-Years Web Cloud Service Free (LAN or WIFI):  
Day/Week/Month/Year Graphic display with 1-Minute interval, 30-Channel monthly energy consumption display, Day/Month graph compare display, Day/Month database download function.**
- 3. 4-Gb Micro-sd Card (10-Year data logging with 1-Minute interval):  
1pc**
- 4. Clip-on Type 100A Current Clamp: 3pcs**
- 5. 2-Wire 230V power cable for single phase measurement (2 meter):  
1pc**
- 6. 9-Sets lcd scroll mode (5-Second interval)): Realtime/Total Power, Day/Month energy and cost display, Temperature/Humidity display, Day/Month Graph display, Day/Month Chart display and Compare display.**  
<https://www.youtube.com/watch?v=uGnNsBYkvMM>
- 7. RS-485 to USB Adapter: 1PC (1pc for 1 project)**
- 8. Temperature and Humidity sensor: Option**
- 9. Air pressure sensor (10 bar): Option**
- 10. Software for Micro SD Card database: Free for limited period.**
- 11. SD Card firmware upgrade up to 5-Years: You can upgrade the firmware only by sd-card.**
- 12. 1-Year energy data report: By using specially made software through RS-485 line.**



# FREE RS-485 SOFTWARE

Date and Time: 2019-05-28 12:39:33      Time duration: 0 hour 4 min, 38 sec.

Port Connection  
Port: COM7      Baudrate: 9600      Open      Close

Device  
Slave ID: 1      Last ID: 3

Poll count: 139

| Power Data 1             |        | Power Data 2 |        |
|--------------------------|--------|--------------|--------|
| Current, Phase A         | 0,87   | WHA_POS      | 0,01   |
| Current, Phase B         | 0,87   | WHB_POS      | 0,01   |
| Current, Phase C         | 0,87   | WHC_POS      | 0,01   |
| Current, 3-Phase Average | 0,87   | VT_RMS       | 210,72 |
| Voltage, A-N             | 210,90 | PF_T         | 0,99   |
| Voltage, B-N             | 210,76 | VA_A         | 0,18   |
| Voltage, C-N             | 210,50 | VA_B         | 0,18   |
| Active Power, Phase A    | 0,18   | VA_C         | 0,19   |
| Active Power, Phase B    | 0,18   | WATT_T3      | 0,55   |
| Active Power, Phase C    | 0,18   | VA_T3        | 0,55   |
| Reactive Power, Phase A  | -0,02  | VAR_T3       | -0,05  |
| Reactive Power, Phase B  | -0,02  |              |        |
| Reactive Power, Phase C  | -0,02  |              |        |
| Power Factor A           | 0,99   |              |        |
| Power Factor B           | 0,99   |              |        |
| Power Factor C           | 0,99   |              |        |
| Frequency                | 59,72  |              |        |
| WATT_T3 Total            | 0,00   |              |        |
| VA_T3 Total              | 0,00   |              |        |
| VAR_T3 Total             | 0,00   |              |        |

Temperature-Humidity      Polling Control  
Temperature: 0,00      Poll Interval: 2 Sec.

Korins Inc.

Rm. 708, Dunchon-daero 474, Gyeonggi Province, Korea.  
Postcode: 13229

Tel: +82-31-777-1588, +82-10-8905-1244

[www.mywatt.biz](http://www.mywatt.biz)    [www.energyeye.kr](http://www.energyeye.kr)    [hyh@korins.kr](mailto:hyh@korins.kr)

<https://www.youtube.com/watch?v=IN-vfCj75eA>